



**Stoneacre**  
Properties



**Carter Avenue, Leeds, LS15 7AJ**  
**Offers Over £400,000**

**\*\*\*NO CHAIN\*\*\* OFF STREET PARKING\*\*\***

Offered to the market is this stunning four bedroom terrace house located on Carter Avenue, Leeds. The property is situated in a sought after location close to all local amenities including: shops, schools and transport links. The property briefly comprises of: entrance hall way, lounge, kitchen/diner, utility area, first floor landing, master bedroom with en suite and walk in wardrobes, bedroom four, family bathroom, second floor landing, bedroom two, bedroom three and a jack and jill bathroom. Externally the property benefits from a low maintenance rear garden with decking and a patio area. To the rear is also a parking space providing off street parking. This beautiful property is not one to be missed to make this house your home please contact the office to arrange your viewing.

## ENTRANCE HALL WAY

Door to the front elevation. Central heating radiator.

## LOUNGE



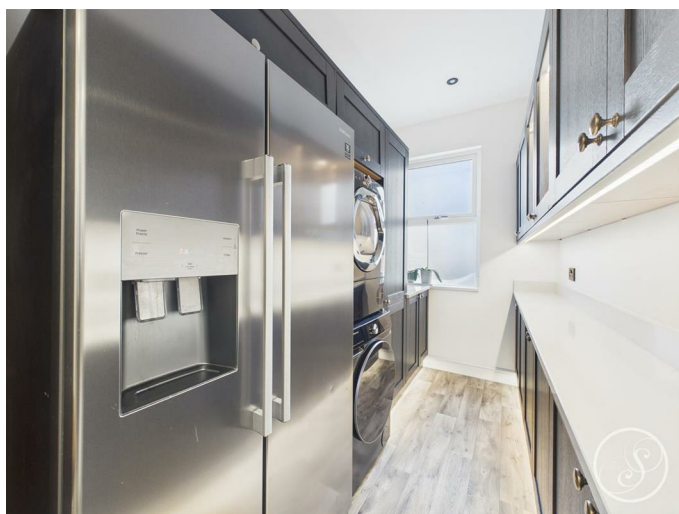
Double glazed window to the front elevation. Fire with surround. Built in storage space. Central heating radiator.

## KITCHEN/DINER



Range of wall and base units. Breakfast bar area with space for stools. Space for oven with extractor fan above. Sink and drainer. Door leading to rear garden.

## UTILITY AREA

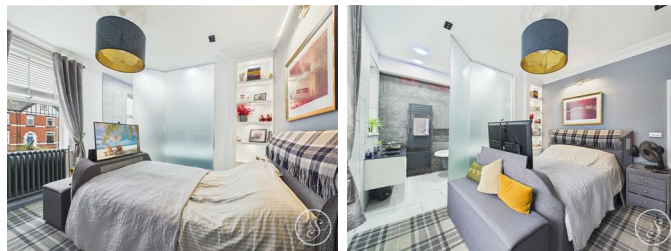


Double glazed window to the rear elevation. Space for fridge/freezer. Plumbing for washing machine and space for a dryer.

## FIRST FLOOR LANDING

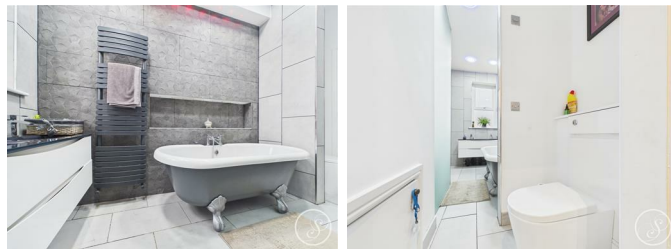
Doors off leading to bedroom one, bedroom four and family bathroom.

## BEDROOM ONE



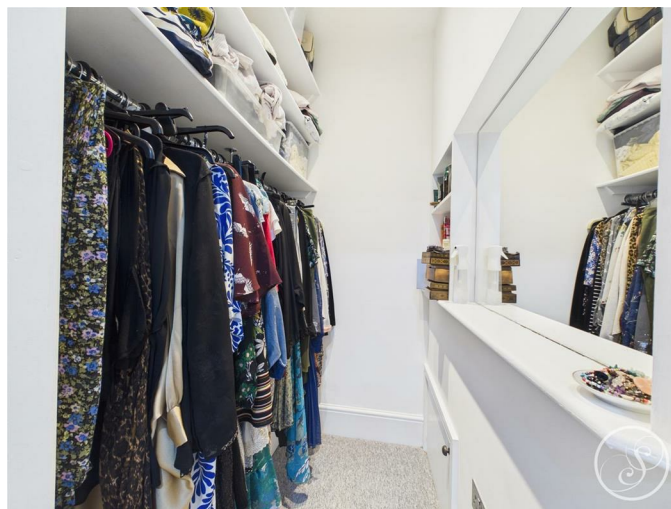
Double glazed window to the front elevation. Fire with surround. Fitted wardrobes. Central heating radiator.

## EN SUITE



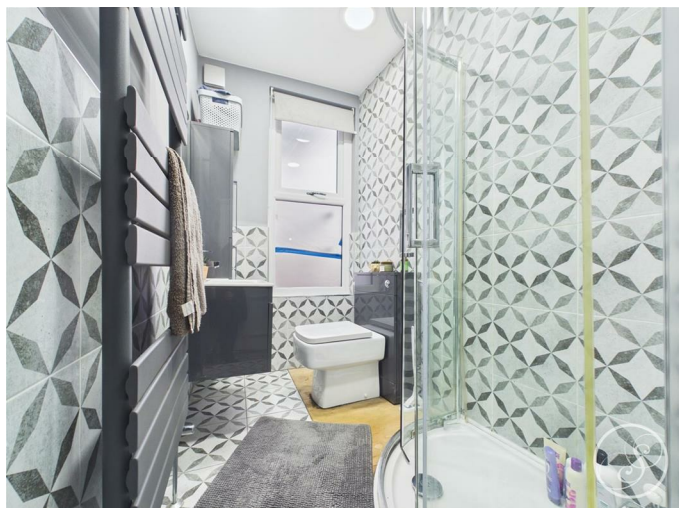
Double glazed frosted window to front elevation. Free standing bath. His and hers sink. Low flush w.c. Heated towel rail.

## WALK IN WARDROBE



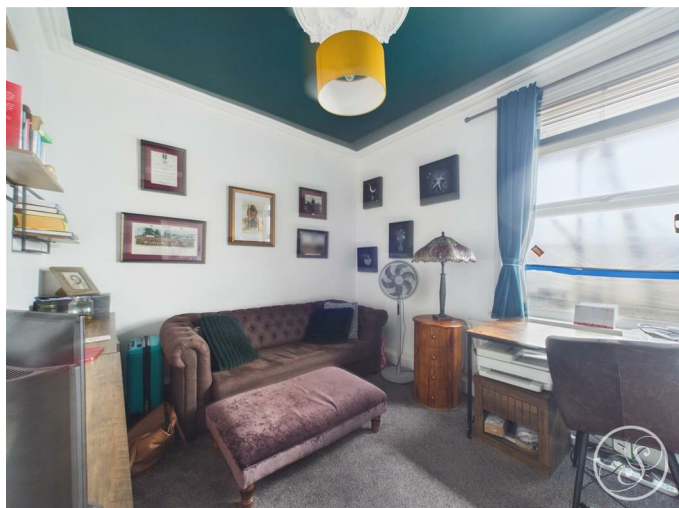
Space for storage. Currently used as a walk in wardrobe.

## FAMILY BATHROOM



Double glazed frosted window to the rear elevation. Shower cubicle. Low flush w.c. Wash hand basin with storage below. Heated towel rail. Built in storage unit.

## BEDROOM FOUR

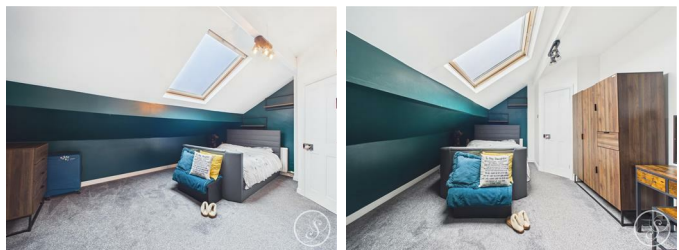


Double glazed window to the rear elevation. Central heating radiator.

## SECOND FLOOR LANDING

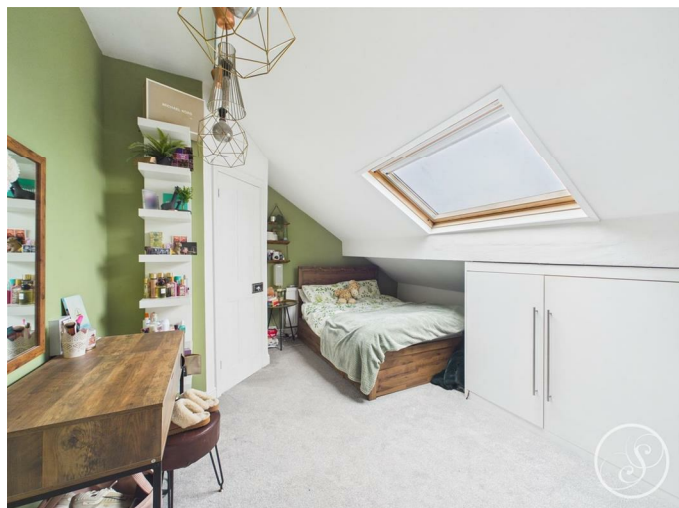
Doors off leading to bedroom two and bedroom three.

## BEDROOM TWO



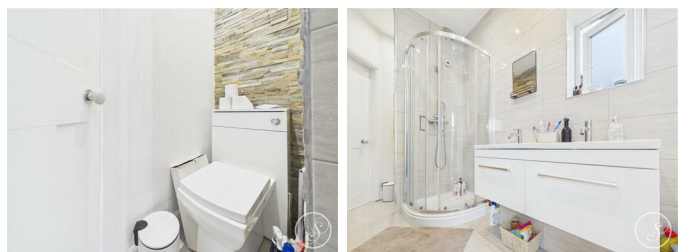
Velux window. Central heating radiator. Door leading to Jack and Jill bathroom.

## BEDROOM THREE



Velux window. Central heating radiator. Door off leading to Jack and Jill bathroom.

## JACK AND JILL BATHROOM



Shower cubicle. Low flush w.c. Wash hand basin with storage below. Heated towel rail.

## EXTERNAL



Low maintenance with decking

Floor Plan

